

# B&B Filmstrip v.2.2 – Documentation

By Panos Efsthadiadis

## 1. INTRODUCTION

“B&B filmstrip” is a Photoshop™ action set whose magic touch will turn your images into impressive filmstrips. Its aim is not to replicate the exact look of a 35mm filmstrip but to offer you a free, eye-catching way of presenting your pictures.

The action will work with virtually any image. Keep in mind though that it is designed to work perfectly with **landscape** images of the common **4:3** width/height format. If you have a portrait image, I recommend you rotate it by 90 degrees before running “B&B Filmstrip”

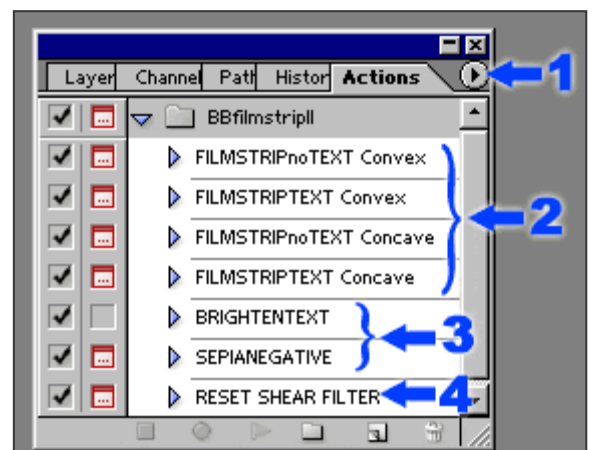
*B&B Filmstrip version 2.2 uses much faster techniques than its earlier versions. In addition it doesn't require your involvement in shaping the sprocket holes.*

## 2. THE ACTIONS SET

Run Photoshop. Select the actions palette (**Window>Actions**). Click on the *actions options menu* right arrow (**Figure A, 1**) and select load actions. Locate and load the *BBfilmstripll.atn* file.

The BBfilmstripll action set appears (**Figure A**). It contains 7 actions:

- *B&B filmstrip* creates two categories of effects; *convex* and *concave* filmstrips. Each one of these effects comes in two versions, the **FILMSTRIPNoTEXT** and the **FILMSTRIPTEXT** actions (**Figure A, 2**). More details about these actions are given on pages 2 and 3.
- *Having created* your filmstrip, you can then run the **BRIGHTENTEXT** and/or the **SEPIANEGATIVE** actions (**Figure A, 3**) to get three extra effects. These actions are described on page 4.
- The **RESET SHEAR FILTER** action is the last action of the set (**Figure A, 4**). It was written to help you reset the *shear filter* in your system and ensure the filmstrip edges are curved smoothly. It is described on pages 5 and 6.



**Figure A. The B&B Filmstrip Actions set**

1. The actions options menu button
2. The four core actions of the set
3. The two complementary actions
4. The share filter resetting action

### 3. THE 4 FILMSTRIP ACTIONS

Both the [FILMSTRIPnoTEXT](#) and the [FILMSTRIPTEXT](#) actions create a filmstrip effect. The difference is that the [FILMSTRIPTEXT](#) action creates a more sophisticated text-decorated filmstrip (compare **Figure B1** and **B2**, below). This allows you to include your own description and numbering on each filmstrip.



**Figure B1:** Using [FILMSTRIPnoTEXT](#) convex



**Figure B2:** Using [FILMSTRIPTEXT](#) convex

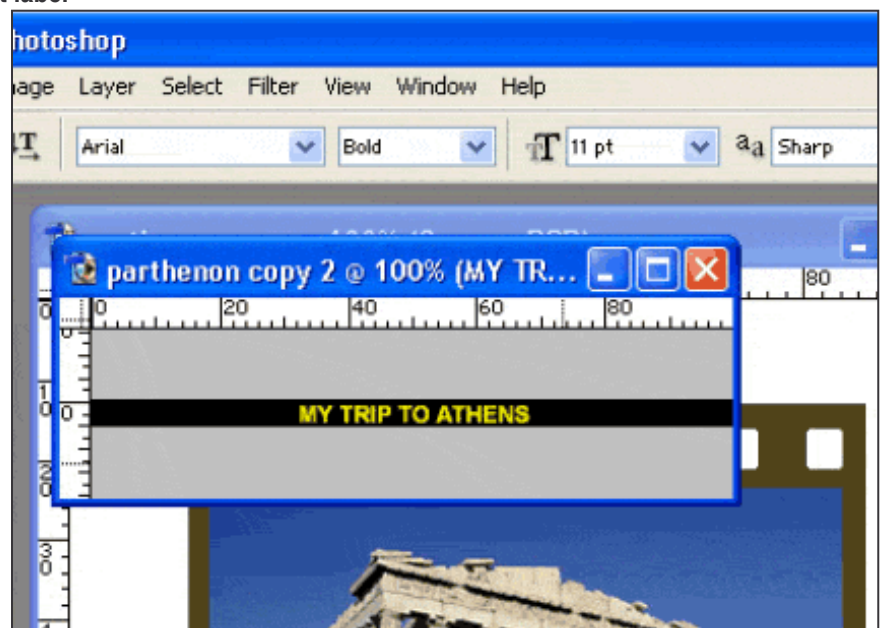
#### a. Running the action

We will study the more sophisticated [FILMSTRIPTEXT](#) action which contains all the [FILMSTRIPnoTEXT](#) steps plus a section that creates top and low edge text labels.

Open a landscape image (preferably of 4:3 ratio). Click on the [FILMSTRIPTEXT](#) action and press the play button. The action starts working. At first it draws the frame around your picture, and then it creates the sprocket holes. Right after, an instruction stop window pops up informing that you are about to insert the top edge text. Read carefully the instructions and press continue.

#### b. Typing the top edge text label

A document containing the phrase "TYPE YOUR TEXT" appears then. At first modify the font size so that the phrase fits in the window. Then replace the default text with a phrase of your preference. This phrase can be a description of your image (**Figure E**). When finished, press the numpad *Enter* key to continue.



**Figure E**

### **b. Typing the low edge text label**

The lower edge text effect is created in the same way. In real filmstrips the lower edge contains information about the number of the shot. By default I am using the “**2 2A**” text. Click between the “2”s and type enough spaces to force the numbers move to the film edges. In this way the effect will look more realistic. Of course you can change the numbering to something like “1 1A” or even replace it with another note.

After having typed the lower edge text press the numeric pad’s Enter key. The whole image will automatically be rotated to the left and will be distorted to get the curved shape. A filmstrip shadow will be created next, to add to the 3D impression. Carefully read what the instruction stop says and press continue.

### **c. Creating the shadow effect**

The Gaussian blur window appears. In real life shadow edges are not crisp but appear to be blurred. Hence, in order to enhance the realism of the effect we need to blur the shadow. By default I am using a blur radius value of 3 pixels. You need to adjust this value according to the size of your image. Use higher / lower values for bigger / smaller images. Observe the way shadow changes on the Gaussian Blur filter’s preview window.

### **c. Creating the glow effect**

To add to the realism, the next step will create a glow effect to emphasise the reflected light on the filmstrip’s glossy surface. This glow effect is actually an individual gradient filled layer. You can adjust its opacity to your liking, or even discard it at the end.

### **c. Rotating the filmstrip**

The final dialogue window allows you to rotate the filmstrip. Use your mouse on any of the image corners to rotate and press the numpad *Enter* key or double-click to finish. Your filmstrip is ready!

*Now it’s time to play with the extra effects that are included in the set.*

## THE 'BRIGHTENTEXT' ACTION

After having created the filmstrip, you can try the **BRIGHTENTEXT** and the **SEPIANEGATIVE** actions to get another two effects.

The **BRIGHTENTEXT** action is particularly useful with the text versions of "B&B Filmstrip". It improves the readability of the text and gives the filmstrip frame a more brown color (see **Figures F1** and **F2** below)



**Figure F1:** Before the **BRIGHTENTEXT**



**Figure F2:** After the **BRIGHTENTEXT**

## THE SEPIANEGATIVE ACTION

This action will produce 2 interesting versions; a film negative & a sepia filmstrip (see **Figures G1** & **G2** below). In the Sepia action you can play with the Hue/Saturation sliders to add your personal touch.



**Figure G1:** The Negative effect



**Figure G2:** The Sepia effect

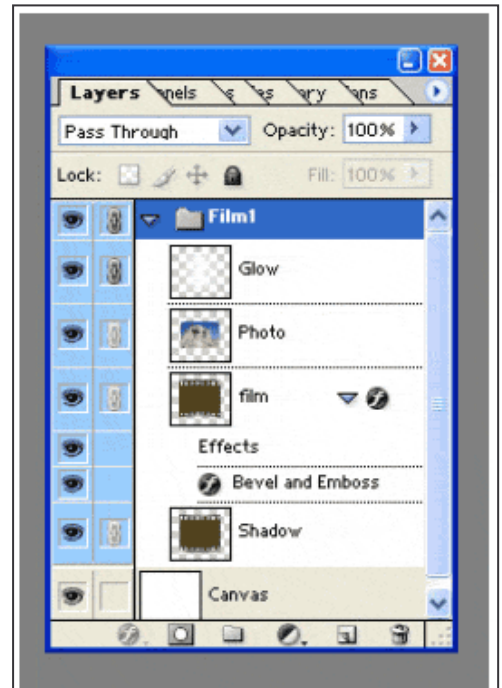


## THE FINAL LAYERS SET

The final product is made up of 4 layers (namely: *Glow*, *Photo*, *Film*, *Shadow*) which are grouped in a layer set called *Film* (see **Figure H**). This layer set is placed upon a white layer called *Canvas*. You can adjust the opacity of the *Glow*, *Film* and *Shadow* layers to your liking. If you want to move the filmstrip on another Photoshop document, just click and drag the layer set.

In order to merge the layer set, do the following:

- Click on the 'eye' located on the left of the *Canvas* layer, to make this layer invisible
- On the Photoshop menu select **Layer > Merge Visible**

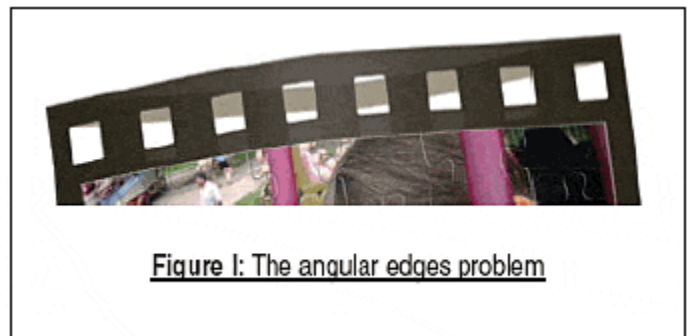


**Figure H:** The final layers set

## ADJUSTING THE SHEAR FILTER

In some cases the filmstrip edges may appear to be angular instead of being smoothly curved (see **Figure I**).

In order to overcome this problem, you need to reset your shear filter. If your filmstrips appear to bent in this way, run the last action of the set, called **RESET SHEAR FILTER** and then play again with the core actions.



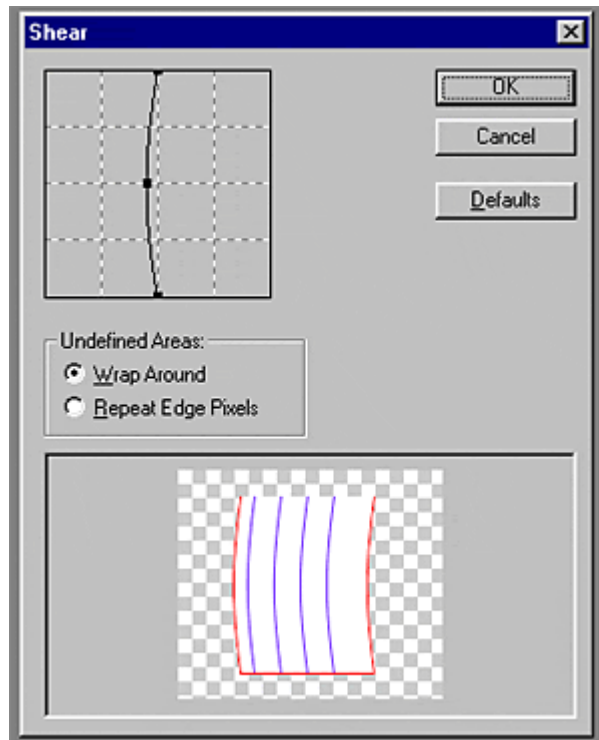
**Figure I:** The angular edges problem

The **RESET SHEAR FILTER** action actually resets the shear filter point list. It creates a new document and you are asked to use your mouse on the shear curve. The shear window appears.

On the top you will see a 4x4 grid, with a vertical black line. Click on the "Defaults" button. Now click on the middle point of this line and drag it slightly to the left to form an arc (see **Figure J**, on page 6).

On the filter's preview window observe the document's red and blue lines. If everything is fine, they should appear to be smoothly curved. Press OK to finish.

You can now go back and run one of the **FILMSTRIPnoTEXT** and the **FILMSTRIPTEXT** actions.



**Figure J:** Adjusting the shear curve

## EPILOGUE

I hope that you will enjoy “B&B Filmstrip” and that you will find a number of different uses for it.

I would like to ask you not to stay in the silent majority of users who download and go: do not forget to go back on the Adobe Studio Exchange, rate this work and also leave a review (good or bad, it doesn't matter as long as it is constructive). Your feedback is very important; it helps us learn from you; it is motivating and is actually the only thing we are asking you to do, to pay us off ☺

Panos Efsthadiadis

[www.PanosFX.com](http://www.PanosFX.com)

© 2004-2005

*This action set is not to be sold or distributed without prior written consent of the author*